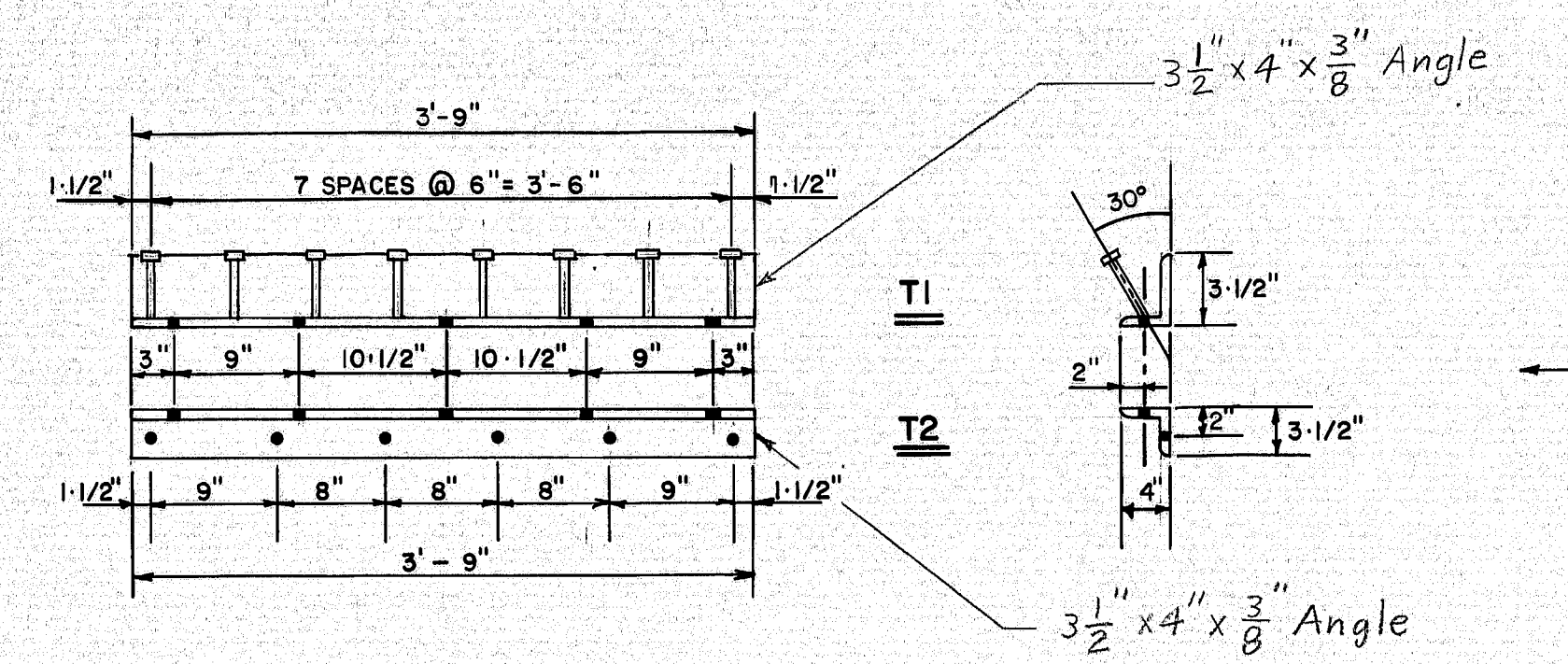
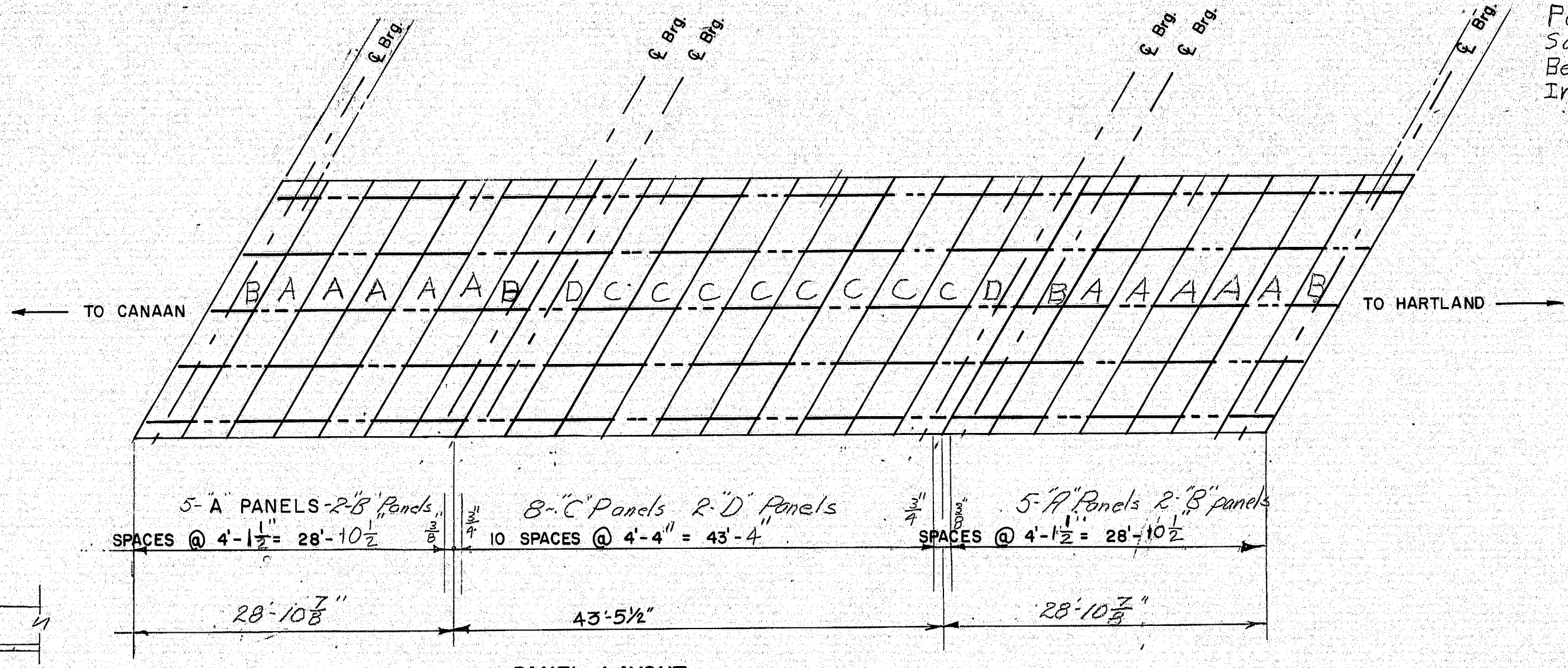


F.R.W.A. REG. NO.	STATE	PROJECT NUMBER	SHEET NO.	TOTAL SHEETS
1	MAINE	3159		



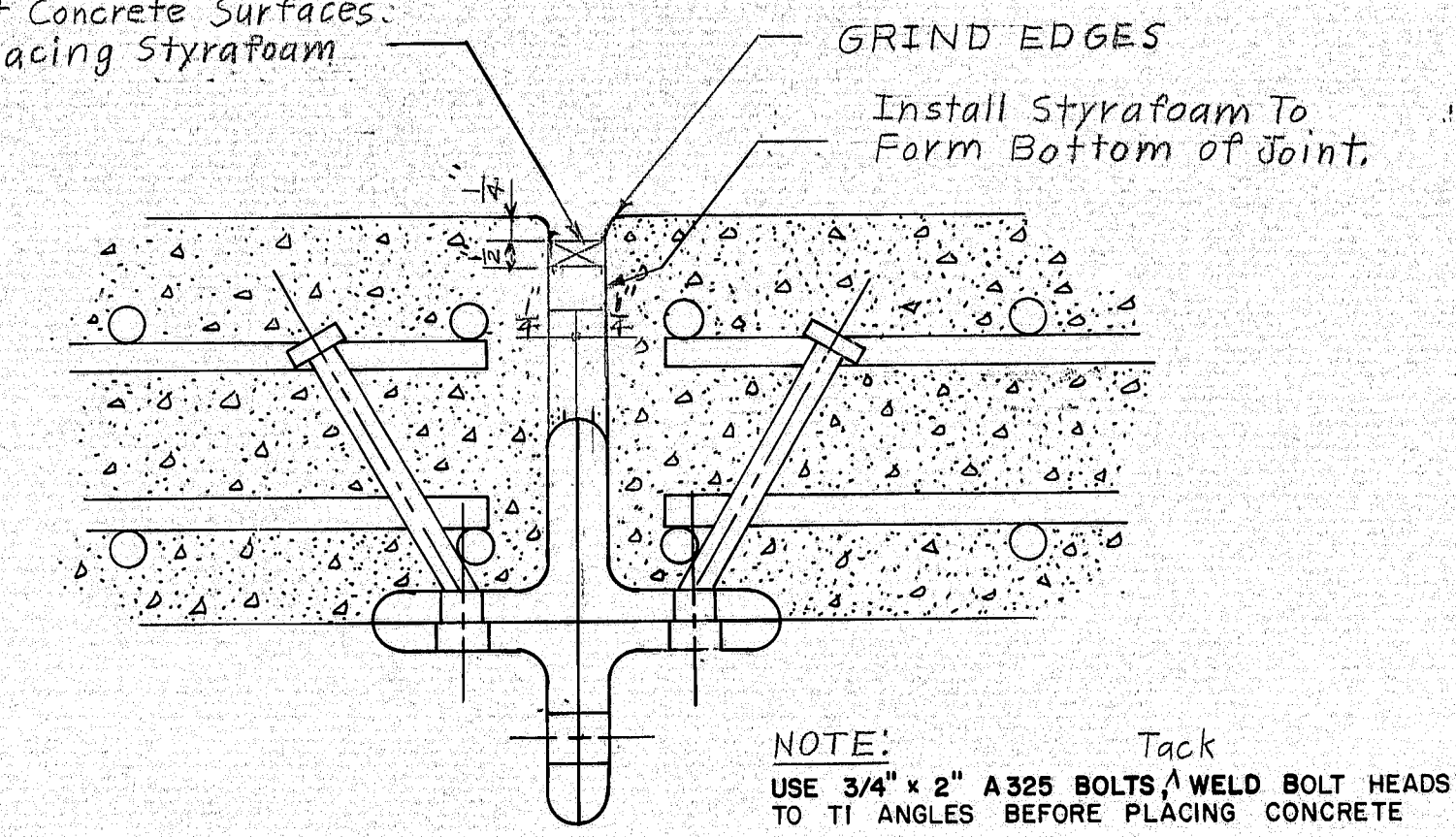
**NOTE**  
Anchor stud may be welded in a vertical position at location shown and bent to an angle of 30° off the vertical.  
1/2" x 6" bolts may be substituted for Anchor Stud.

**NOTE:** DRILL HOLES IN T1 ANGLES 3/4" AND 15/16" IN T2 ANGLES.

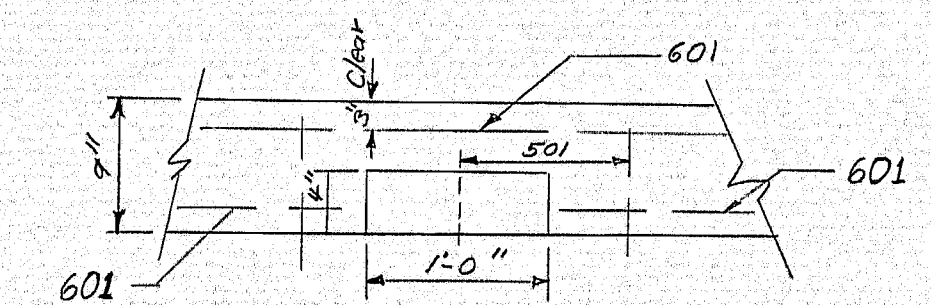


**PANEL LAYOUT**  
DIMENSIONS ARE PARALLEL TO PANEL ENDS  
SEE SHEET 2 FOR DETAIL AT PIERS  
Check overall dimensions; backwall to backwall, before constructing panels.

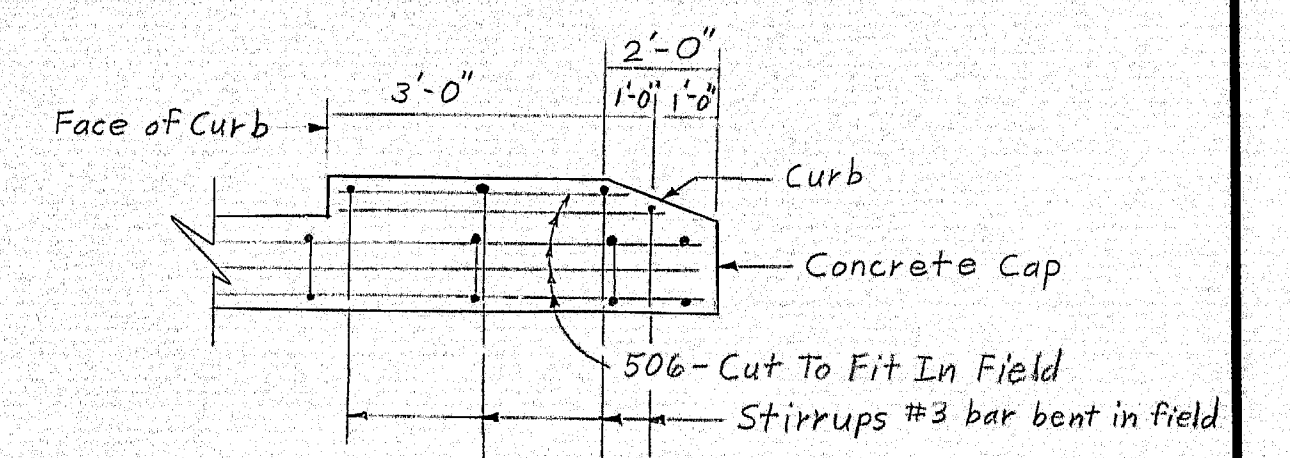
Poured In Place Joint Seal. Sandblast Concrete Surfaces. Before Placing Styrafoam In Seal.



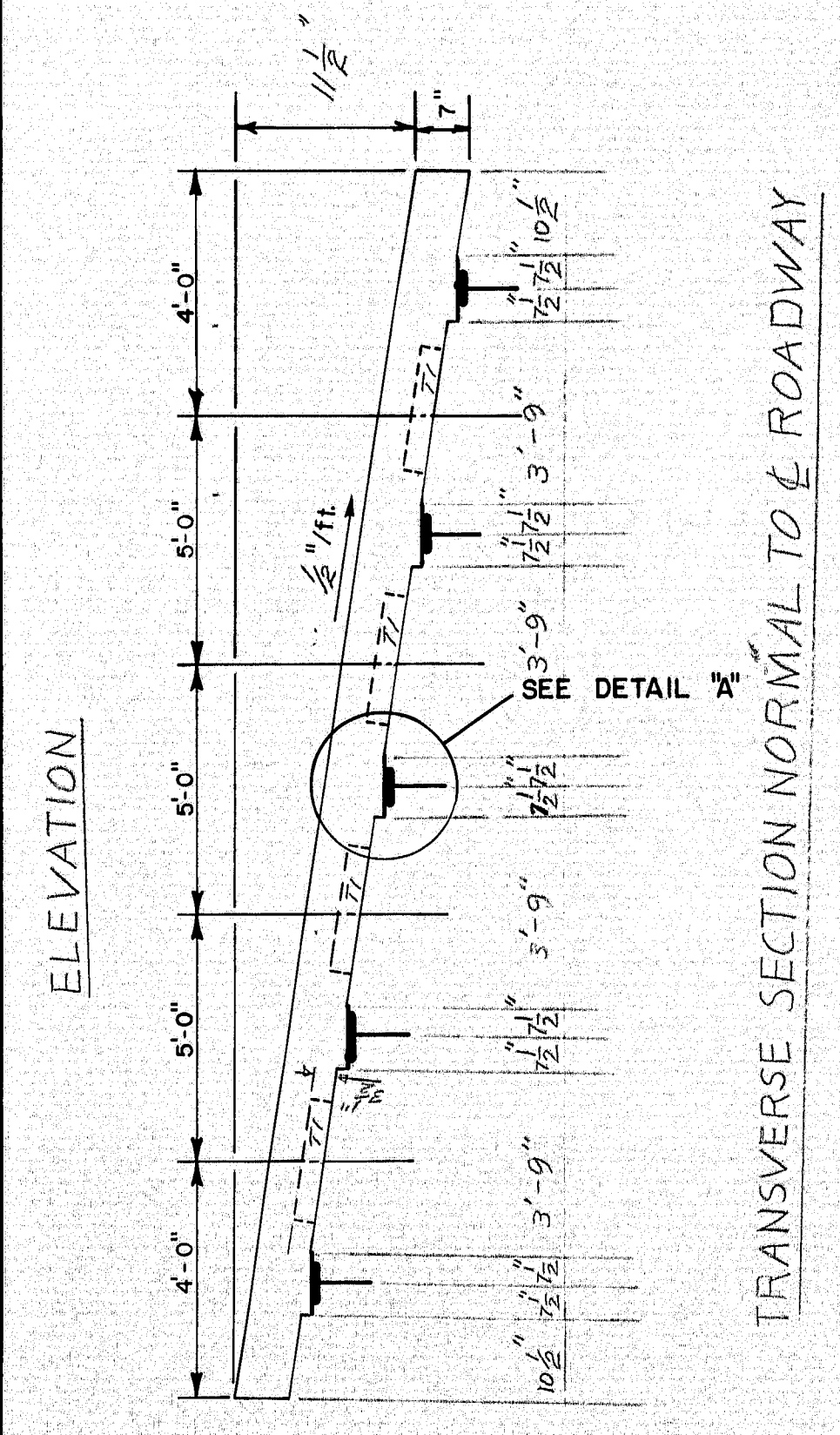
**TRANSVERSE JOINT DETAIL**



**SCUPPER DETAIL**

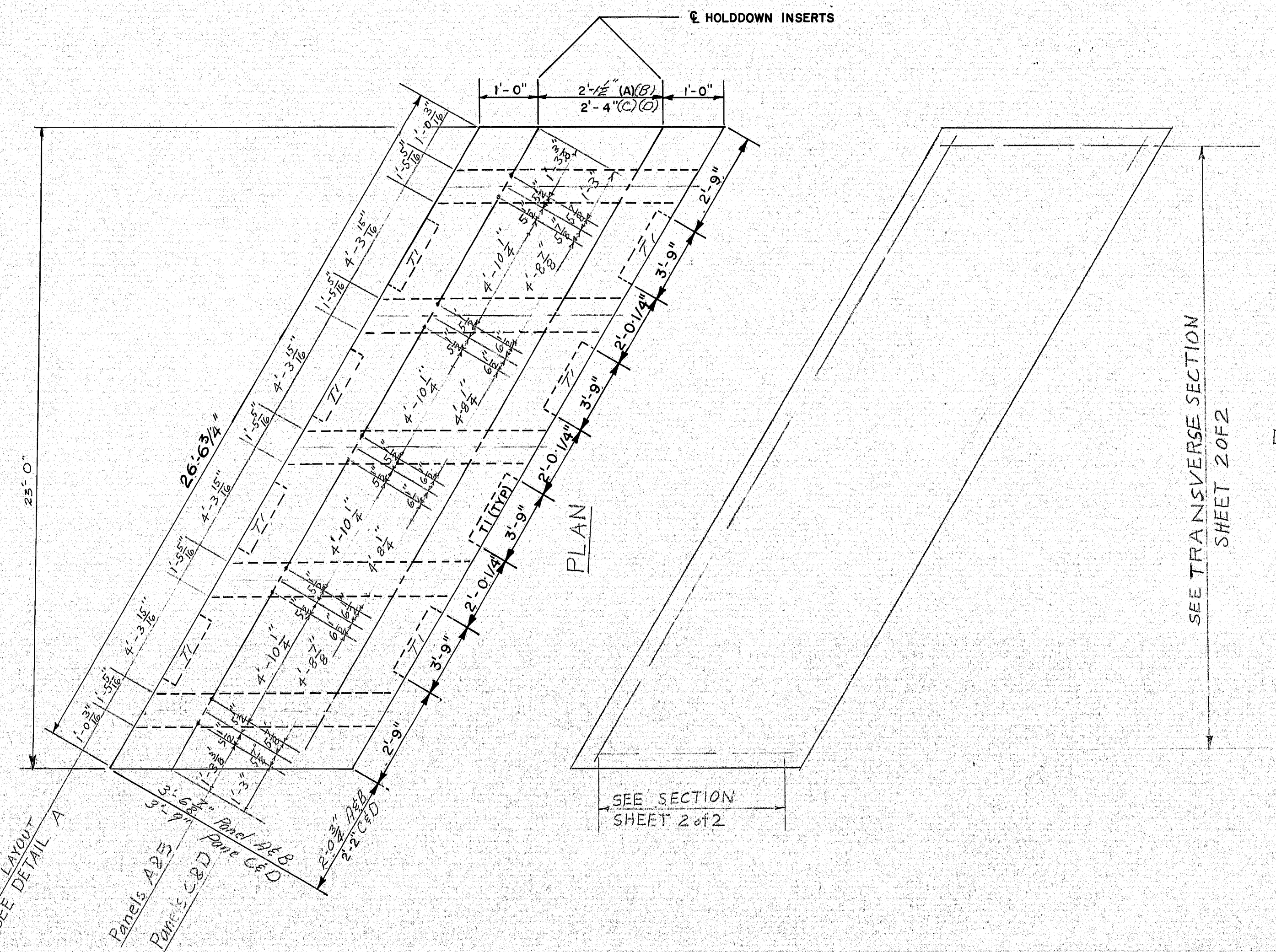


**ABUTMENT WING ELEVATION**



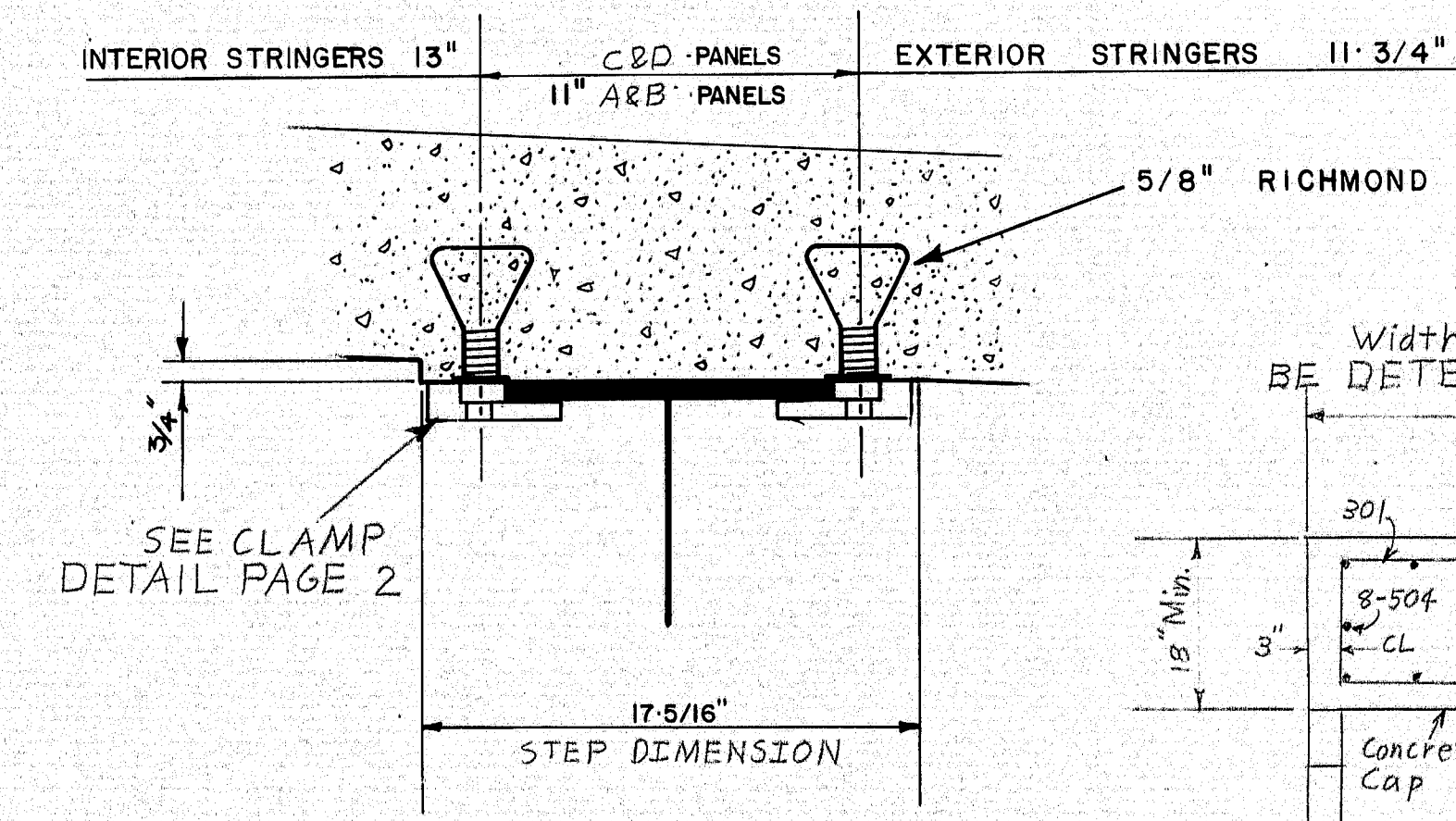
**PANEL DETAIL**

**TRANSVERSE SECTION NORMAL TO ROADWAY**

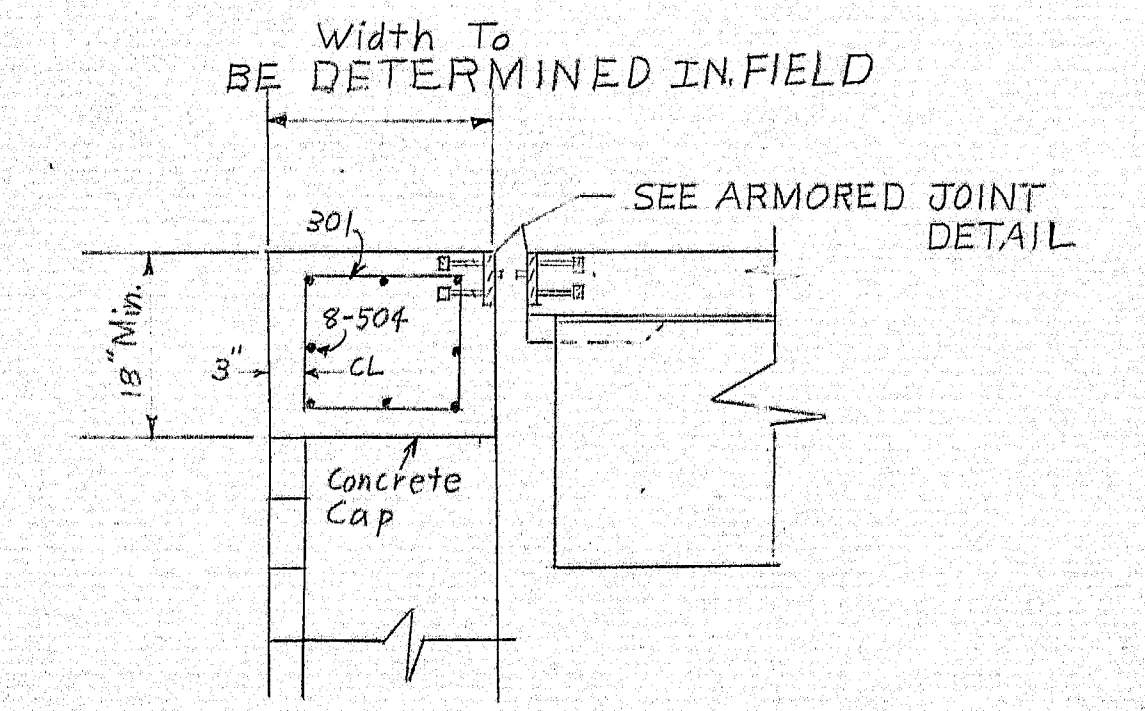


**PLAN**

**SEE TRANSVERSE SECTION SHEET 2 OF 2**



**DETAIL "A"**  
DISTANCES MEASURED PARALLEL PANEL SIDES



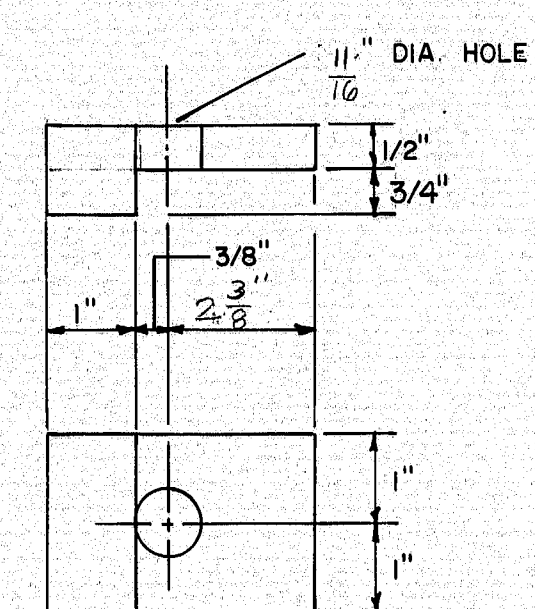
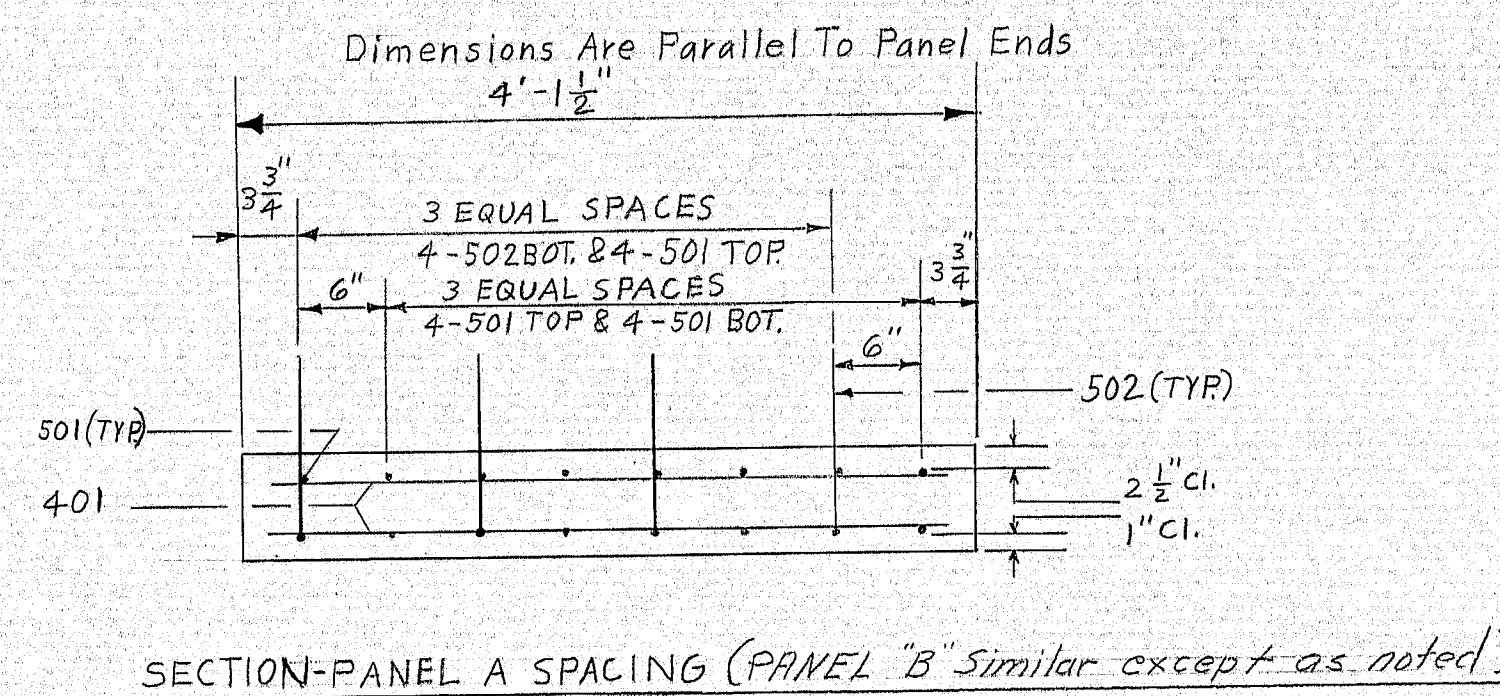
**ABUTMENT JOINT DETAIL**

STATE OF MAINE  
DEPARTMENT OF TRANSPORTATION  
HALL BRIDGE  
CANAAN  
BRIDGE NO. 3159  
SHEET 1 OF 2 AUGUSTA, MAINE May 74

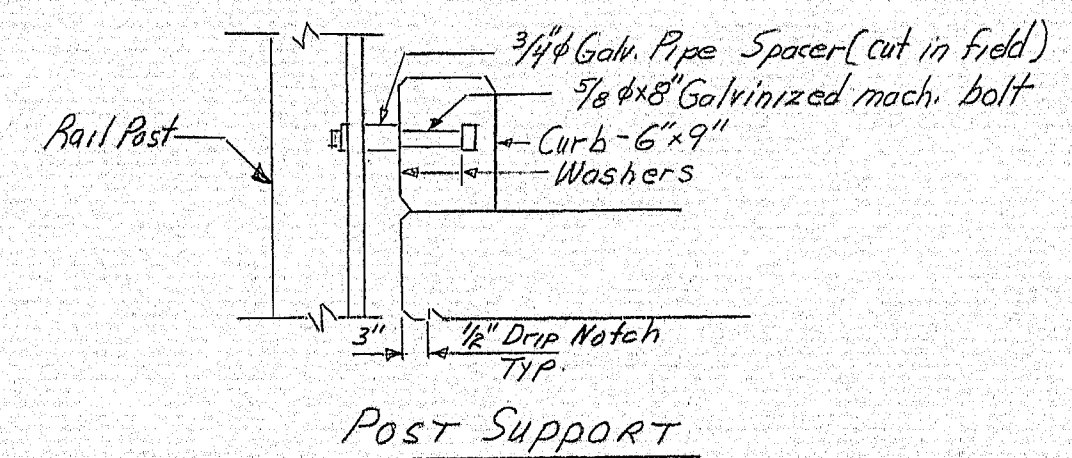
158-55



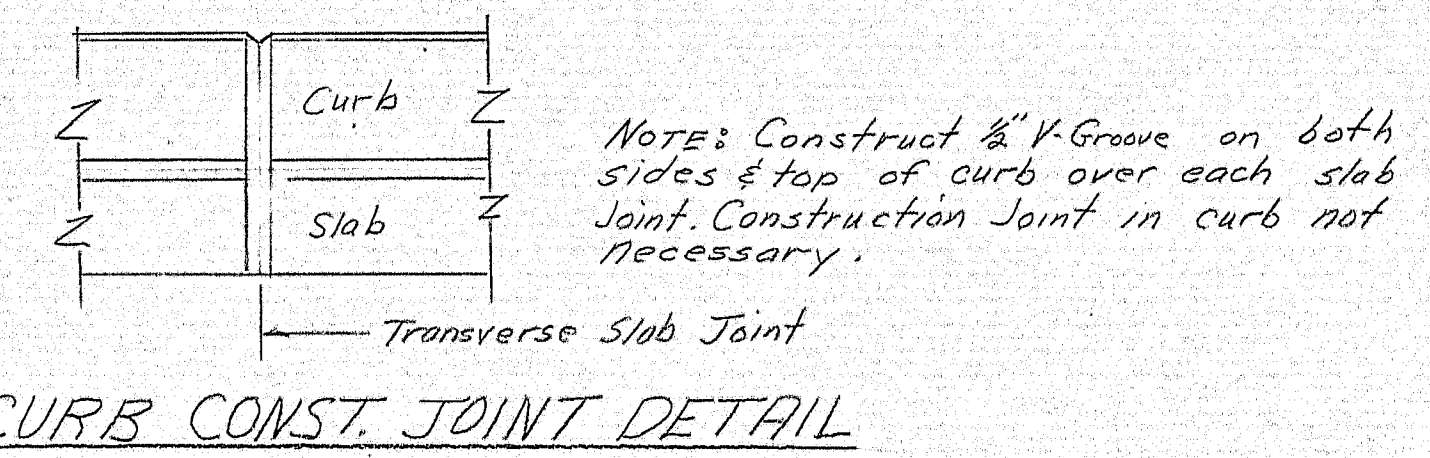
F.H.W.A. REG. NO.	STATE	PROJECT NUMBER	SHEET NO.	TOTAL SHEETS
1	MAINE	3159		



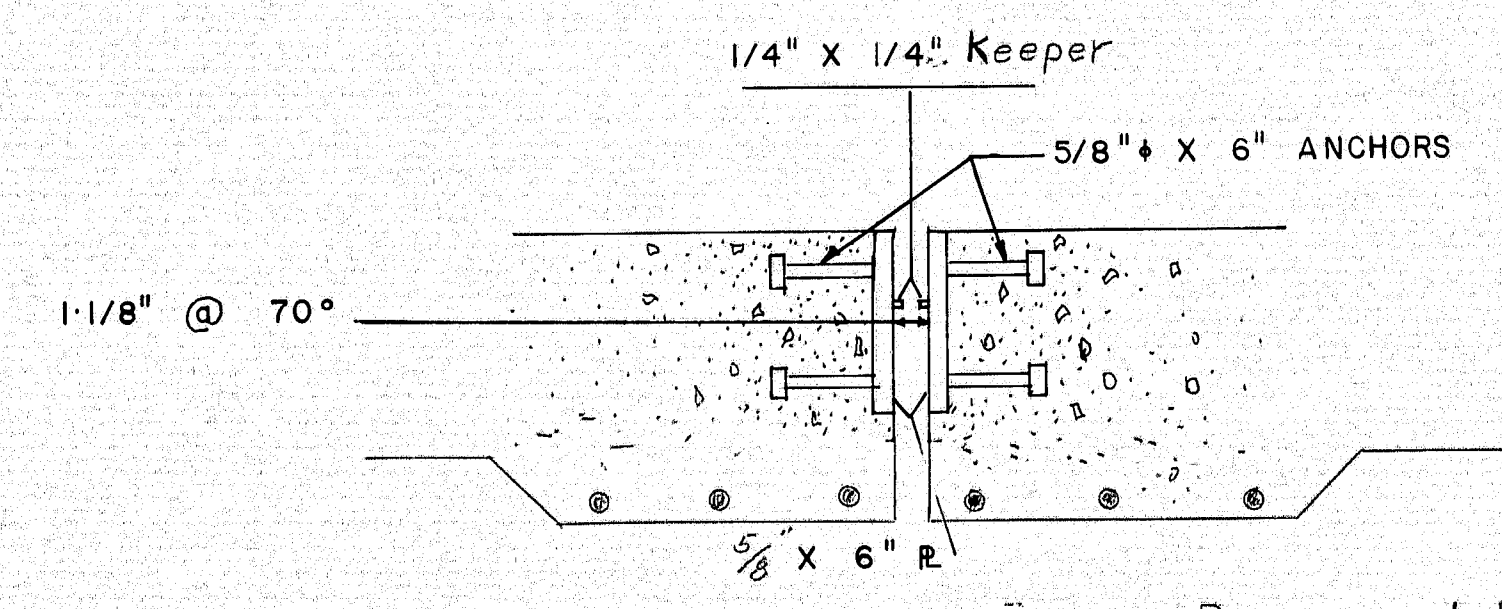
CLAMP DETAIL



POST SUPPORT



CURB CONST. JOINT DETAIL

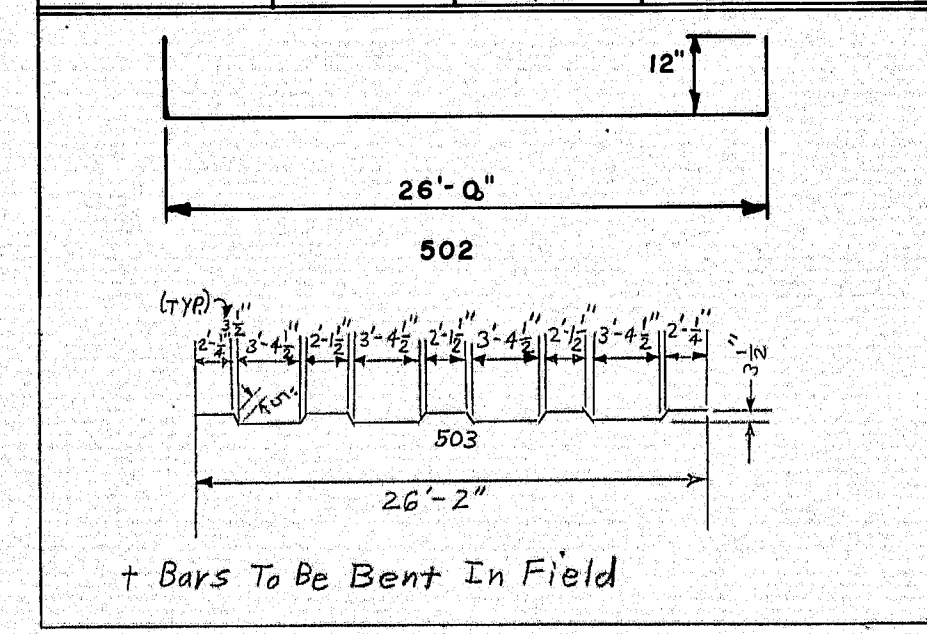


DETAIL AT PIERS

Recommended Joint Seal  
"ACME" S-500

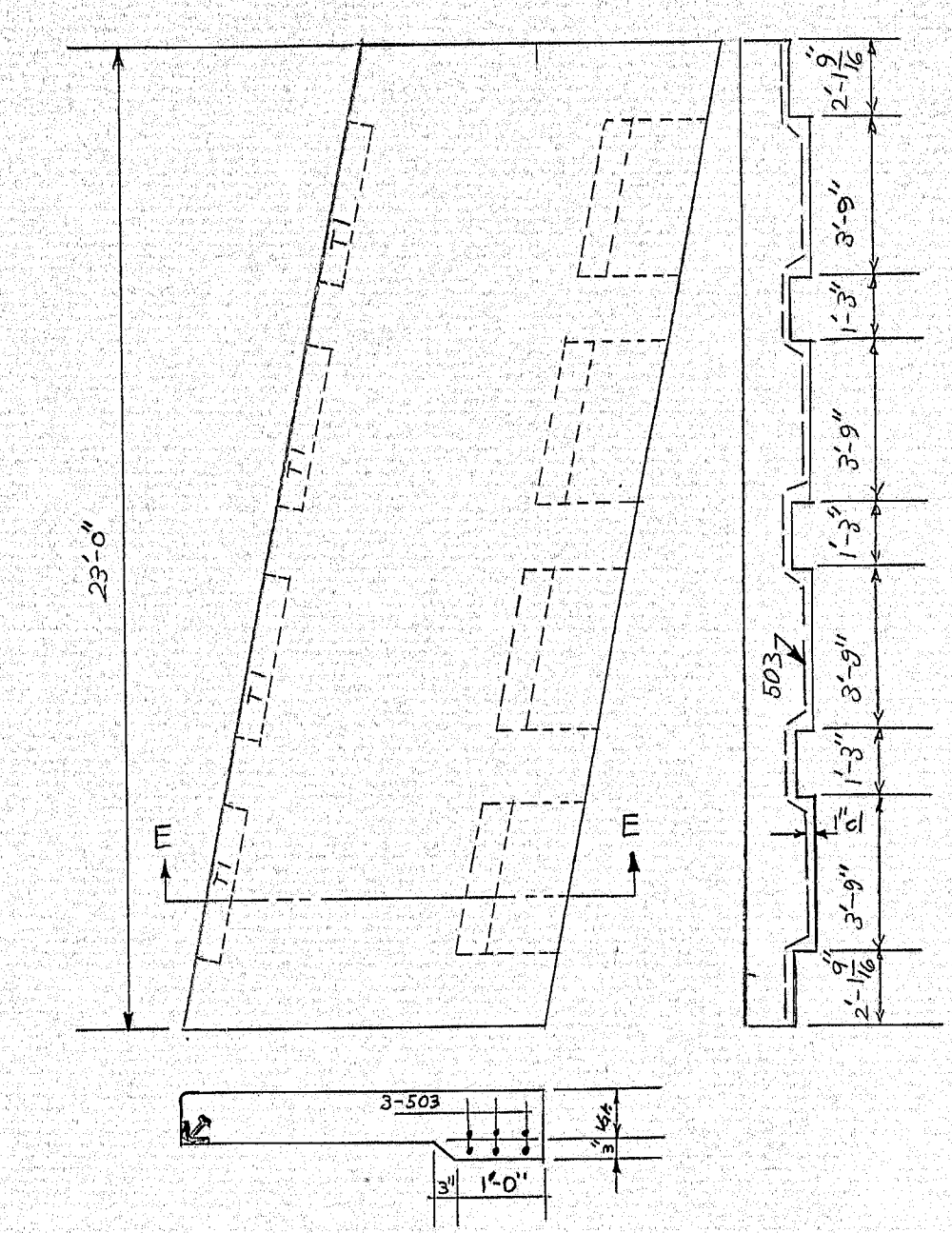
BILL OF MATERIAL	
336	PIECES ANGLE IRON 4" X 3 1/2" X 3'-9" X 3/8" (T1 & T2)
1344	ANCHOR STUDS - 1/2" X 5 3/16" (T1)
1350	H.S. BOLTS 2" X 3/4" With nuts and Lock washers.
96	LIFTING INSERTS - RICHMOND LCB-1 OR EQUIV.
480	HOLD DOWN CLAMPS
480	HOLD DOWN INSERTS - RICHMOND 5/8" DIA. LFW OR EQUIV.
480	MACH. BOLTS 3" X 5/8"
8	ARMORED JOINTS 5/8" X 6" X 26'-6 3/4"
40	Gal. Mach. bolts with 2 plain round washers, 1 lock washer, 1 nut each.
216	ANCHOR STUDS 5/8" X 6" ARMORED JOINT

REINFORCING STEEL			
MARK	NO	SIZE	LENGTH
301 +	15	3	20'-0"
401	740	4	3'-10"
402	540	4	4'-0"
504	16	5	30'-0"
501	310	5	26'-0"
503	20	5	27'-2"
502	110	5	28'-0"
506	3	5	20'-0"
601	25	6	20'-0"



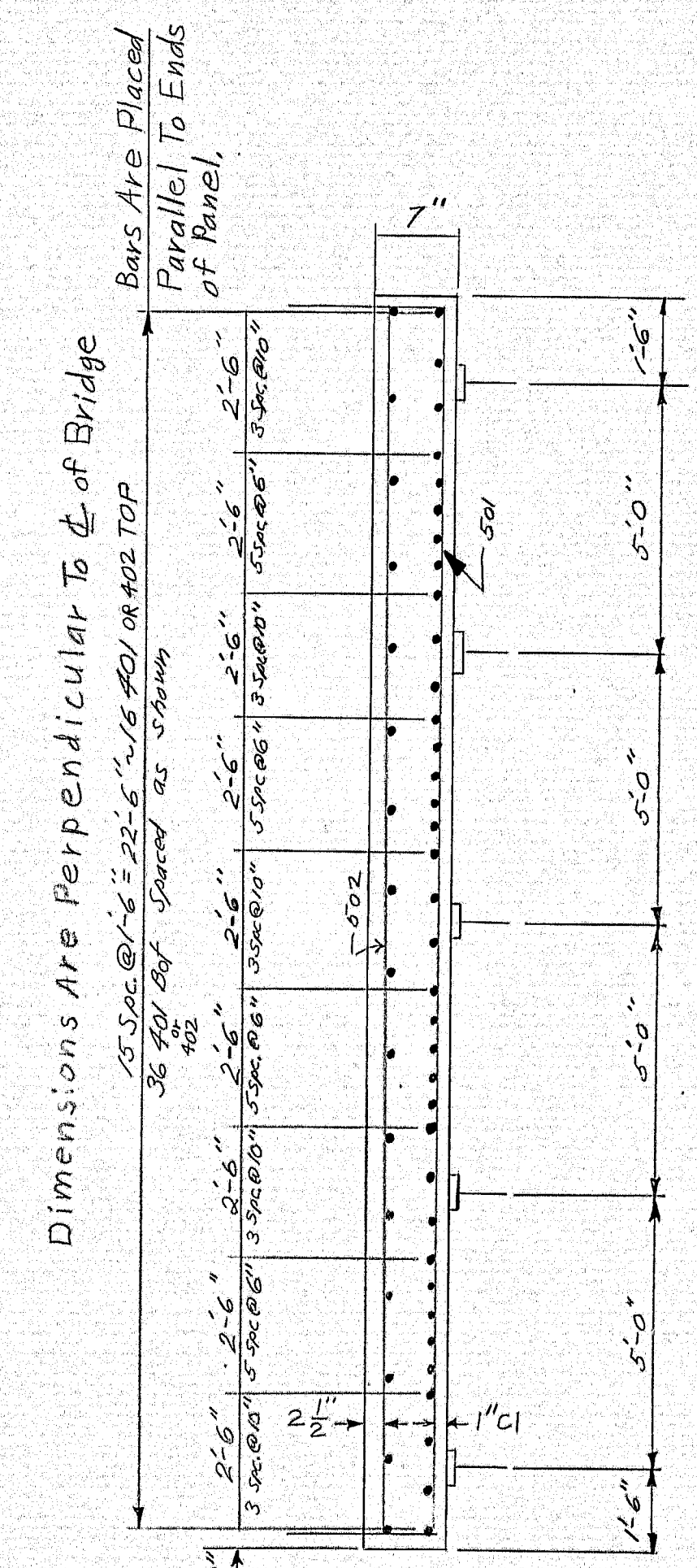
Est. Concrete 50 CY.  
Est. Wt. Reinforcing Steel 10,000 lbs.  
Est. Wt. Structural Steel 17,000 lbs.

PANEL B SAME AS PANEL A EXCEPT AS NOTED  
PANEL D SAME AS PANEL C EXCEPT AS NOTED



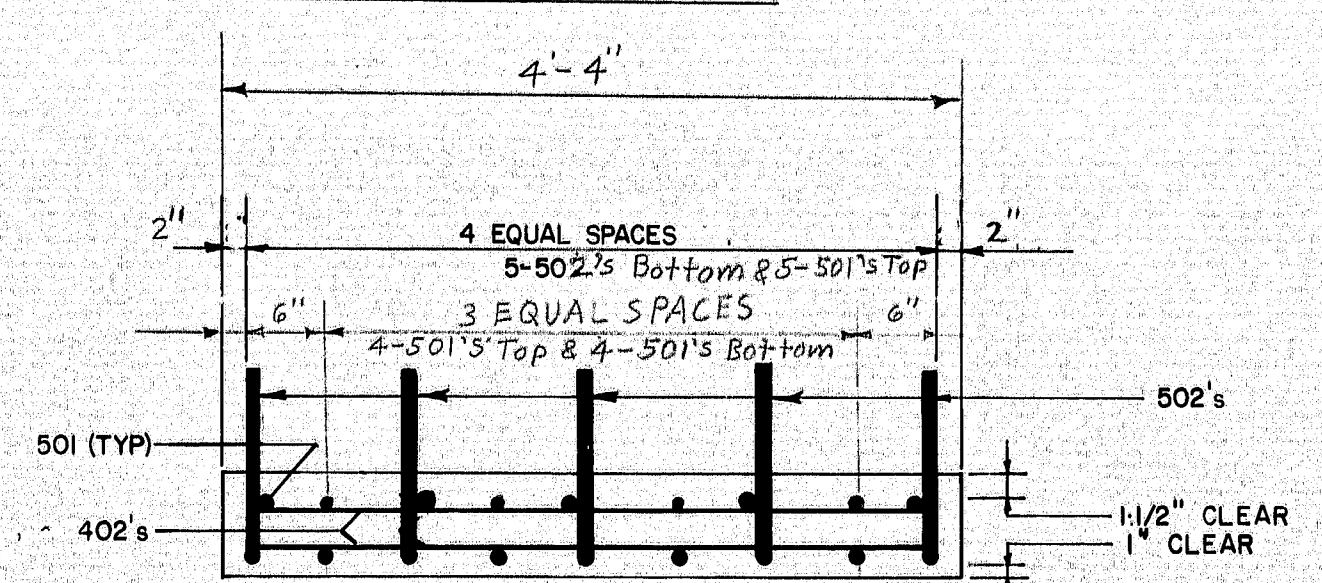
SEC. E-E

NOTE: If diaphragms interfere with the placement of haunched panels, lower diaphragms to clear.



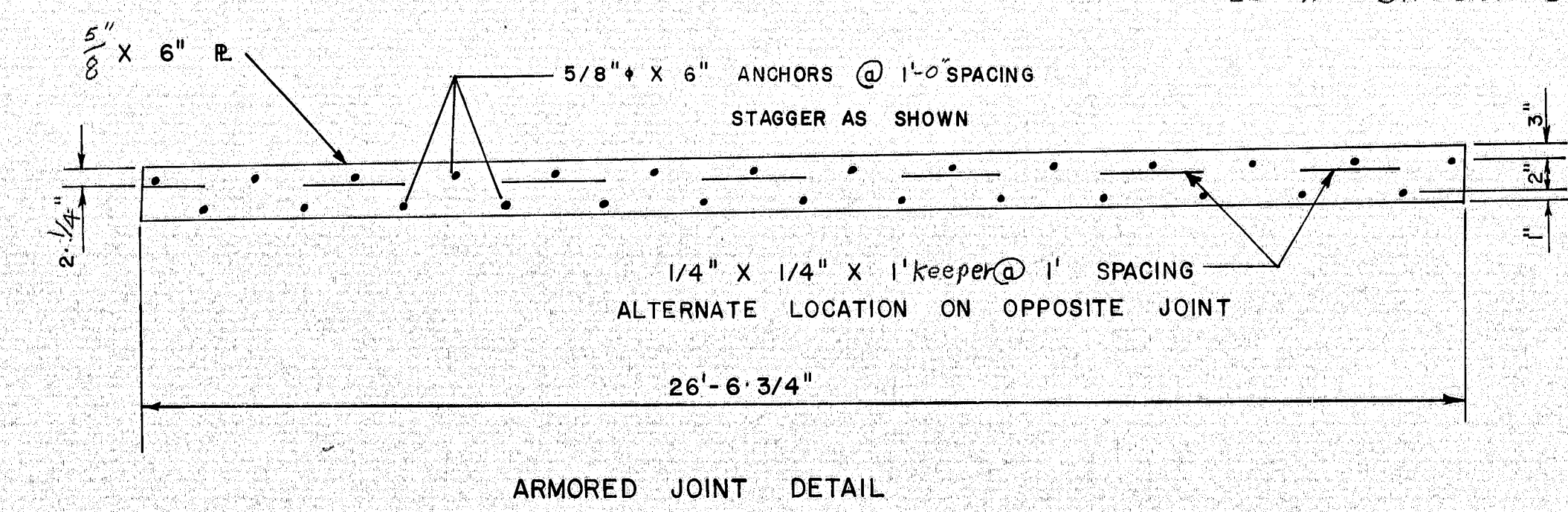
TRANSVERSE SECTION  
NORMAL TO BRIDGE  
TYPICAL ALL PANELS EXCEPT AS NOTED

Reinforcing Detail

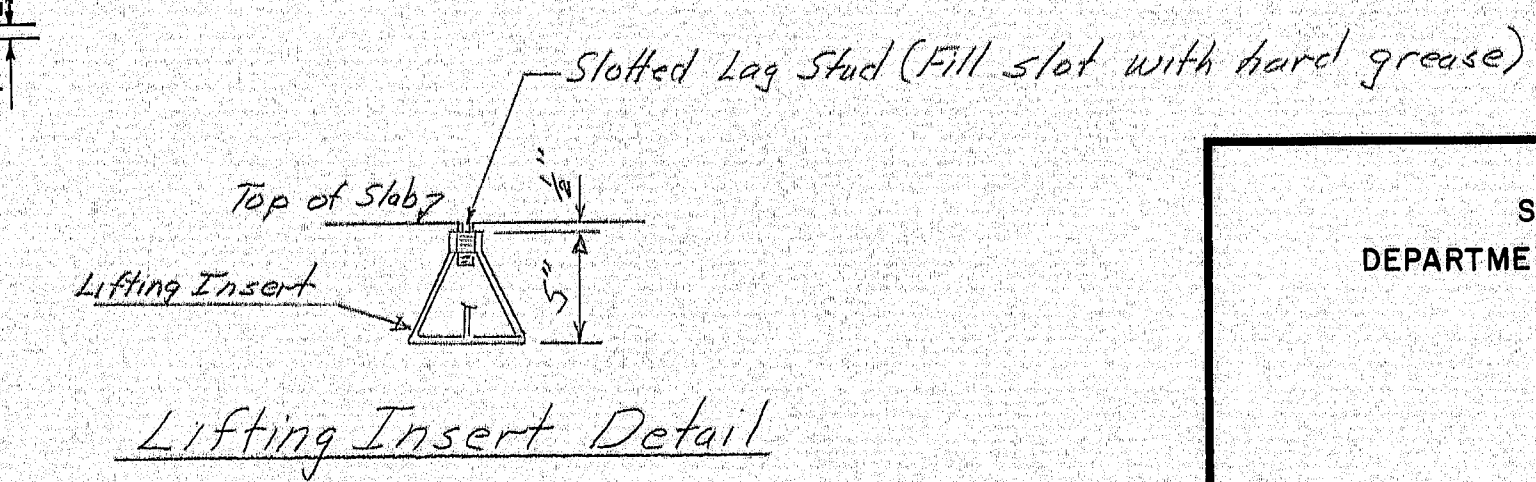


SECTION-PANEL C SPACING (Panel 'D' similar except as noted)

Dimensions Are Parallel To Panel Ends



ARMORED JOINT DETAIL



Lifting Insert Detail

STATE OF MAINE  
DEPARTMENT OF TRANSPORTATION  
HALL BRIDGE  
CANAN  
NO. 3159  
SHEET 2 OF 2 AUGUSTA, MAINE MAY '74

158-56

DESIGN - DETAILED	DATE
T.A.D. E.M.M.	5-74
CHECKED	DATE
E.M.M.	5-74
REVISIONS	
FIELD CHANGES	

PLANS